

*Registered Trademark

One Piece Products

Series IV

El Camino (1968-1972)

One Piece Door Glass

Conversion Manual

www.OnePieceProducts.com

(888)One Products

(888)663-7763

Installation Instructions



1968-1972 Chevy El Camino

First and foremost, we wanted to **Thank you** on your purchase of our newly designed Full One Piece Door Glass conversion kit for the 1968-72 Chevy El Camino. This kit is designed to be a direct bolt on kit with very little modifications required. Our kit is designed to fit the *Electric-Life Power window regulator* upgrade kit, as well as the *original Manual Regulator*.

In the next following pages you will find a detailed description on the installation process of our one piece door glass conversion kit. The pictures will include a short one or two sentence description of the step mentioned.

If for any reason you have difficulties during the installation process please feel free to contact us at **(888)663-7763** or email us at info@onepieceproducts.com . You can call during normal business hours 9:00 a.m. to 4:00 p.m. Pacific Standard Time.

Kit Contents



1.

Standard green curved tempered

3/16" (2) Left & Right

Quantity (2)



2.

Glass run Channel- used to seal the

perimeter of the door glass and also used as an anti-rattle.

Quantity (2)



3.

Roller Channel (Used to replace the

old roller channel, has two holes one on each end including fold down tabs.) Mounts between door glass brackets and the rollers on the regulator.

Quantity (2)



4.

New Inner & Outer scraper set.

Used as anti-rattle channels for the glass, also prevents water from coming into the door area.

Quantity (4)



5.

New front vertical roller guide.

Used in replacement of the old vent glass assembly.

Quantity (2)



6.

Bag of 1/4" Nuts, bolts& washers.

**New
Rollers**



7. channel.

New Rollers included, for our New Roller
Quantity (4 per door, 8 per kit)



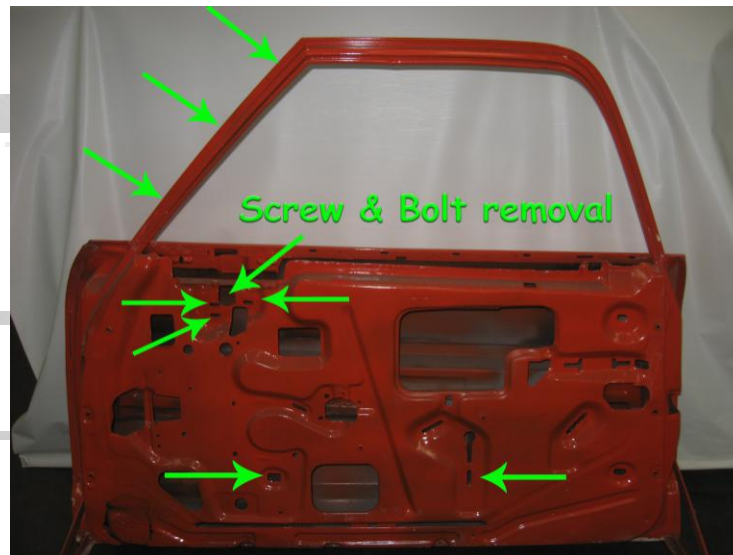
8. gluing various components to this kit.

Weather-strip adhesive. Used for
Quantity (1 Tube)

Tools needed

- ***1 ½" hole saw with Drill.***
- ***1/4" drill bit***
- ***Hand screwdriver with Phillips head tip.***
- ***Flat thin screwdriver.***
- ***10mm, 7/16" nut driver or ratchet, 10mm & 7/16" socket w extensions.***
- ***7/16" wrench***
- ***Allen tool***
- ***Metal hacksaw to cut sheet metal brace.***
- ***1" masking tape.***
- ***100% Mineral spirits, for cleaning glued surfaces.***
- ***Lawn chair w/ six pack for a break!!***

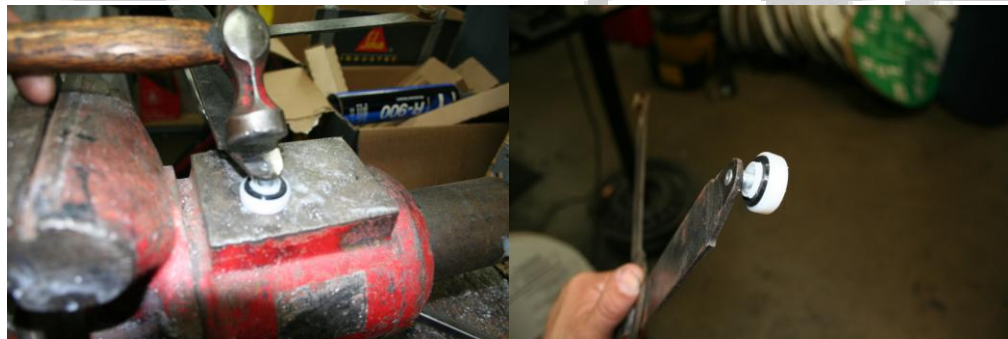
Disassembling the door



- **Remove the 9 screws and bolts** and remove the vent glass (*as shown by the green arrows in the picture.*) **Remove** the old glass run channels and scrapers first to make removing the glass easier. Slide the original door glass all the way down back closer to the latch assembly. This should enable you to slide the vent glass assembly away from its cavity. (***Make sure the 8 bolts are removed first connecting the door to the vent assembly including lower door glass stop.***) Pull back then twist the vent assembly gently so you can slide it out easier. (**Watch out with the lower vent bracket so you won't get stuck.**) **Roll up** the door glass and slide it out of the rollers on the regulator.



- **New Regulator Roller Replacement** Take out the manual regulator; you need your 7/16" socket and ratchet for that. **You will be changing** the two older *smaller rollers* that ride on the glass rail to the *larger New ones* supplied in the kit. **Simply grind** the expanded part opposite side of the roller and use your center punch to punch it out the old Roller. **Simply slide** the new larger Roller on and flare the aluminum with a hammer. After you done, make sure the stud of the New Roller **DOES NOT SPIN**, (it should be **hammered solid.**)



Now bolt the old regulator with the new Rollers back on the door.

Installing THE KIT

Run Channel Installation



1.

Locate the angled corner

measure down the B-pillar, put a slit on the back end of the run channel, and then simply glue in if necessary. You will **need to cut**

Installing New Roller channel

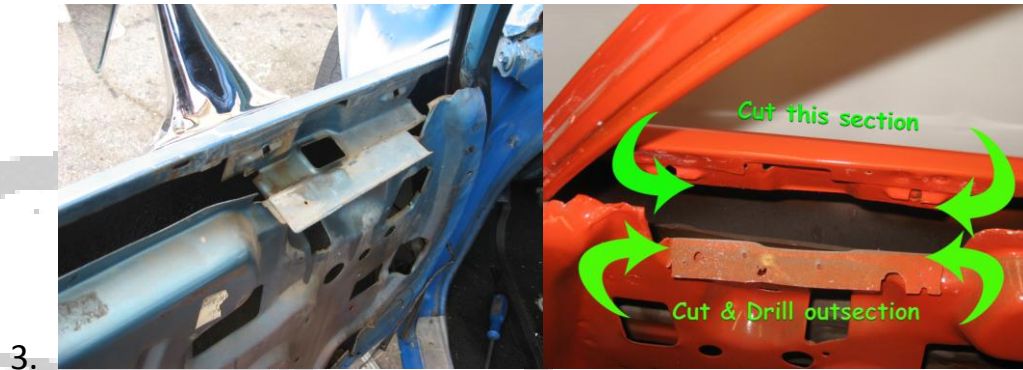


2.

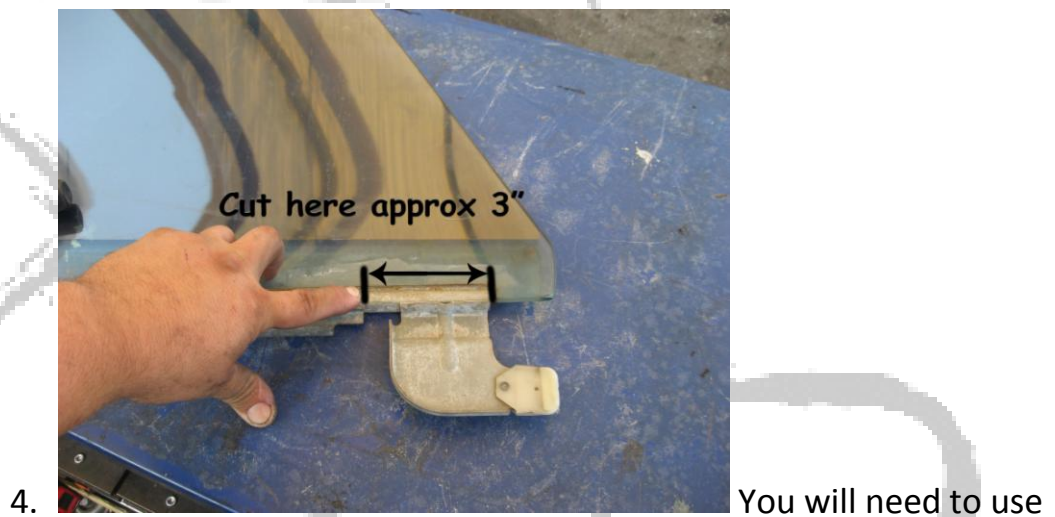
Slide in the New Roller

channel with the 4 holes in it. This will mount to the brackets that are glued on to the glass

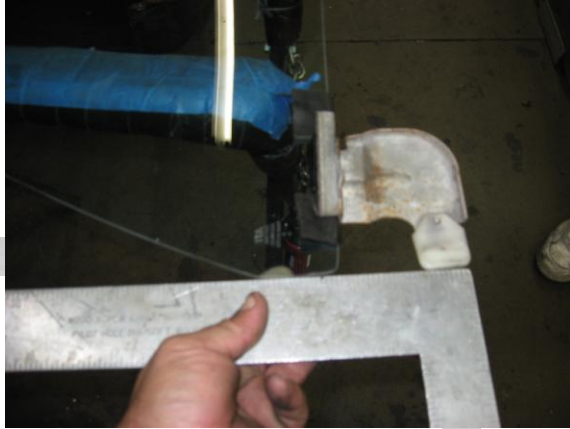
Installing the glass



Cut the brace between the inside and outside door skins.



You will need to use the rear guide that is set on the original glass. Cut approximately 3" and J.B. Weld, urethane, epoxy it on the new glass.



5. Take a straight edge to make sure the glass ride in the channel correctly.



6. This is what you should have. Don't forget to let the glue dry completely before final install.



7. Slide in the glass from either the inside or outside of the door.



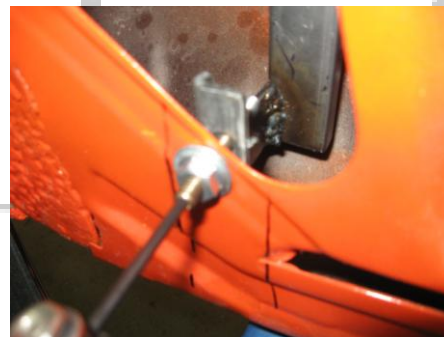
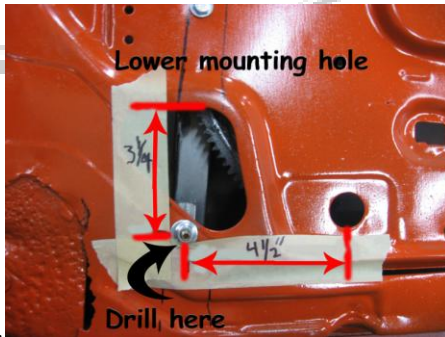
8. Slide the glass forward then bolt on the rear 10mm nut



9. You will use the existing square access hole for the front bracket then bolt on the nut.



10. Using the existing upper hole left by removing the vent crank assembly.



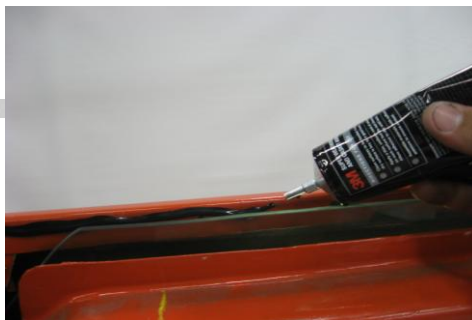
11. Drill the lower mounting hole by finding the triangular hole top edge of the door measure down by $3 \frac{1}{4}$ " then horizontally $4 \frac{1}{2}$ " from the center of hole as indicated.

12. Now roll the Glass all the way up, Please keep in mind you will need to help it in place because the front guide is not installed yet!

13. Now slide in the vertical guide in place and bolt it in place.

Check for adjustments: Simply horizontally slot the upper mounting hole and lower mounting hole. Also use the Allen tool for adjusting the pitch of the glass. (Make sure you use the Adjustment Bolt with the built in Washer for future adjustments on the bottom of the new vertical guide

Gluing on the new horizontal scrapers.



Then tape down & let dry for about 30 min.

Relocating Original door glass Stop



There will be a mounting position for the door stop. From the upper hole slide $\frac{3}{4}$ " down and fold in the tab on the bracket and mount bolt on.

- **HOOOORAYYYYY!!!!**
- **You're Done!!**

Give the new glued on scrapers time to dry then, about 1 hour, then you could roll your window up and down making sure that there is NO binding of any sort!!

GREATJOB!!!



DOESN'T THAT LOOK BETTER!!!

Thank you for Purchasing our 1968-72 Chevy El Camino Full One Piece Door Glass. We hope you found this kit to be an easy install, and would gladly appreciate any comments you have.

